

Stay
Connected

Build a better team and community!

Horses can't talk, but they speak if you listen.

Discover how horses can teach us how we work as a team, be honest with ourselves, communicate with others and more.

Good actions give strength to ourselves and inspire good actions in others.

Volunteers and donations enable Eagle Mount to provide possibilities in adaptive recreation for individuals with disabilities.



Eagle Mount Great Falls

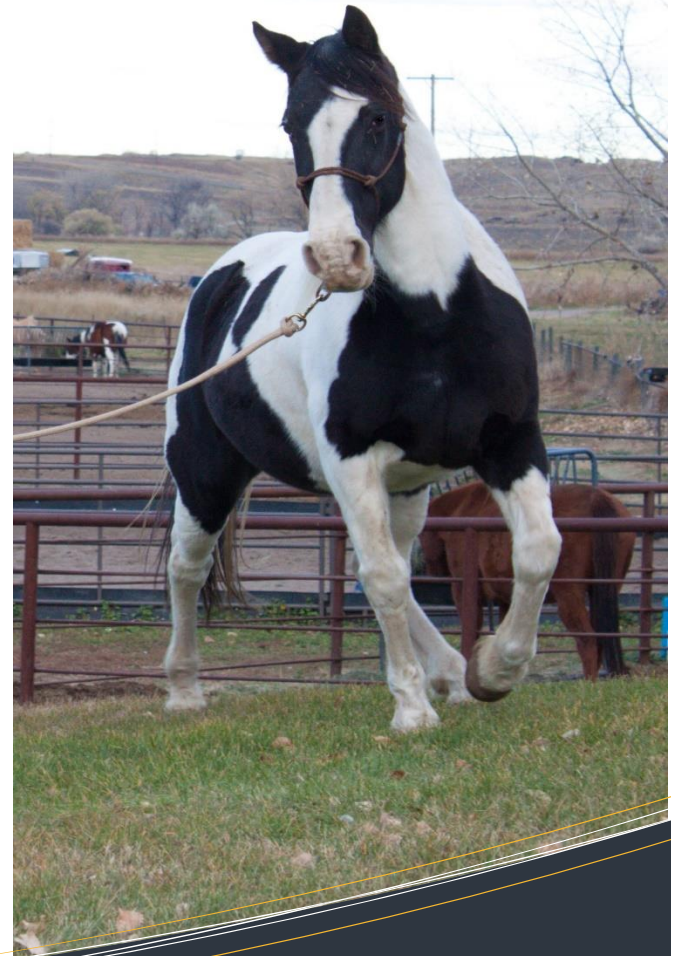
is a non-profit organization that provides therapeutic and recreational activities for children and adults with physical, developmental, behavioral and/or mental challenges, striving to improve the quality of life for them and their families.

Eagle Mount Great Falls

P.O. Box 2866
Great Falls, MT 59403
Office Phone: (406) 454-1449
Office Fax: (406) 454-1780

Eagle Mount Equestrian Center

4792 13th St So
emgfequestrian@gmail.com
Equestrian Center Phone: (406) 771-4829



Eagle Mount

- ❖ Possibilities
- ❖ Acceptance
- ❖ Community
- ❖ Teamwork

www.eaglemount.net

EMPACT Eagle Mount – Possibilities, Acceptance, Community, Teamwork

Eagle Mount's **EMPACT Program** offers Equine Assisted Learning (EAL) sessions to individuals or groups as well as community service projects.

EAL is well known as Facilitated Equine Experiential Learning. It harnesses the power of the relationship with the horse as a path to self discovery and growth. This process can help by giving a new awareness of self and foster personal development through relationships with horses and people.

Experience an extraordinary connection. Discover a refreshingly new relationship between horse and human, where the horse becomes your teacher.

Group EMPACT Sessions – Please call for pricing. Will customized to number of individuals in each session.

1.5 Hour Session

½ Day – 4.5 Hour Session

Individual EMPACT Sessions

1.5 Hour Session **\$55**

½ Day – 4.5 Hour Session **\$170**



What can we learn from a horse?

Horses are incredibly forgiving. They are capable of filling places we are incapable of filling ourselves. -Buck Bannanman

Horses can help individuals become better team players, develop problem solving skills, improve leadership abilities, communicate more effectively, and build healthier relationships.

How can we learn from a horse?

Our equestrian team will guide you through various games and other hands-on horse activities that will allow you to work one-on-one or with a team alongside our horses. These activities will also include discussion and reflection.

Need more information?

- Check out our website and watch our EMPACT informational video and meet our staff and horses! www.eaglemount.net
- This is a very individualized program requiring specific activities to fit the needs of each group or individual. Call us today to set up a consultation to customize your experience! 406-771-4829

Horses can make a lasting impact on those who choose to receive it.



Give Back Days

- **Volunteer** to help keep Eagle Mount's costs down by assisting with chores and other property maintenance. This also helps us learn self-care, care taking and accountability.
 - ❖ Groups or individuals are welcome.
 - ❖ There is no charge to volunteer. Other program volunteer opportunities can be found on our website.



- **Donations** are always welcome and needed to keep our programs running! Give us a call today or visit our website to learn how you can help.

www.eaglemount.net

